

Village Hall Bookings

The Village Hall is currently booked on a weekly basis for Pilates (1 hr Tues and Thursday mornings) Band practice (2 hrs Tuesday evening), Art Club (3 hrs Tuesday afternoon), Little Fishes (2 hrs Wednesday morning), Aikido (2hrs Wednesday evening and 2 hrs Sunday mornings), Karate (1 hr Friday evening), Tang Soo Doo (1 hr 9 a.m. Saturday morning) and occasional dance classes.

On Saturday September 13th the hall facilities have been booked by a Scout Group who will be camping on the playing field outside the hall. There will be 13 Scouts plus their leaders, who will take responsibility for the group and leaving the hall and surrounding areas in a clean condition.

Tea and Chat is still on the last Thursday of the month and is well supported.

The Hall is also used on a monthly basis by the Parish Council and Tea & Chat.

The cost of hiring the Hall from 1st October 2023 is £11 an hour for village use and £16 an hour outside the village. Payment for private events is required when bookings are made.

MVAS

The solar panels have finally arrived, having been ordered in May, and have now been installed. They are at two of the three most significant locations as determined by the Speed Watch surveys in 2018, where they will remain as permanent fixtures:

- By the Cinnamon (monitoring northbound traffic towards Ellington).
- By Home Close (monitoring southbound traffic towards Perry and Buckden).

The plan was to site one MVAS by Chestnut Close, rather than Home Close, but this is not feasible due to the overhanging trees, which would render the solar panel ineffective.

The displays will be changed from time to time to help maintain effectiveness, as recommended by Morelock, the manufacturer. Data will not be downloaded, unless a snapshot is specifically requested.

Proposal for Establishing a Grass and Wildflower Meadow on Grafham Village Playing Field

Introduction

The Parish Council supports the proposal to create a wildflower meadow on a section of Grafham Village Playing Field. This initiative aims to improve local biodiversity, enhance the beauty of the playing field, and provide an accessible green space that can be enjoyed by all members of the community.

Location and Scope

The proposed meadow will be established on a section of the playing field that has been carefully chosen to ensure the football pitch remains fully available for use. The location is closer to the village hub, which makes it easier for people with disabilities and limited mobility to access and enjoy the area.

The meadow will start small in size as a pilot scheme and may be expanded over time, depending on community feedback and the success of the initial planting.

As part of the project, the bonfire area will need to be moved slightly from its current position to accommodate the meadow.

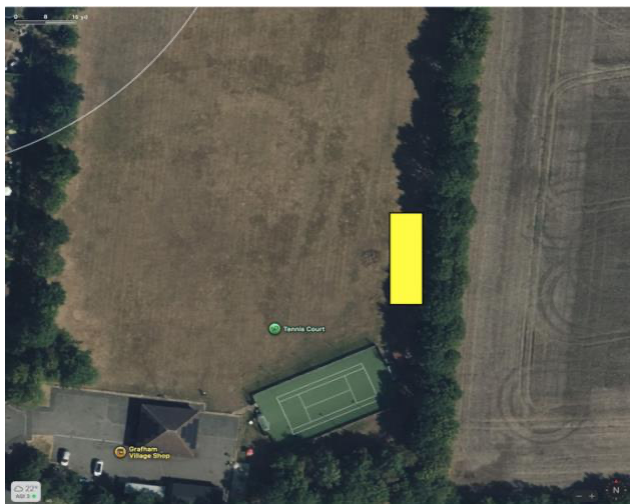
Initial Costs and Equipment

To begin, the area will be marked out using metal rope posts and rope, at an estimated cost of **£50**.

Clear signage will be provided to explain to residents the purpose of the cordoned-off area. Laminated information signs will be installed, and an article will be published in *Grafham Gossip* to raise awareness and encourage community support.

A simple soil tester will be purchased (approx. **£10**) to determine the best type of wildflower seed for Grafham's soil conditions.

Wildflower seed will then be sourced from the **British Wildflower Seed Company** at an estimated cost of **£150**. This supplier is known for providing ethically sourced and native wildflower seed mixes, ensuring the meadow supports local pollinators and wildlife.



Method for Establishing the Meadow

1. Preparation of the Area

- o The chosen area will be cut back to short grass and cleared of debris.
- o The soil will be lightly scarified (raked or harrowed) to create bare patches where

wildflowers can establish.

- o Results from the soil tester will guide which seed mix is most appropriate.

2. Sowing the Seed

- o Seeds will be sown in autumn or spring, when conditions are most suitable.
- o The seed will be mixed with sand or sawdust to help distribute it evenly by hand

across the prepared ground.

- o Once sown, the area will be lightly raked again to ensure good seed-to-soil contact.

3. Maintenance in the First Year

- o The meadow will be cut back every 6–8 weeks during the first summer to reduce the

dominance of grasses and give wildflowers a chance to establish.

- o Arisings (cut grass) will be removed to lower soil fertility, which benefits wildflowers.
- o Informational signage will remain in place throughout this stage to explain to

residents why the area may look different during establishment.

4. Ongoing Management

- o From the second year onward, the meadow will be cut once in late summer (after flowering and seed-setting) and again in early spring if necessary.

- o Regular monitoring will be carried out to ensure the meadow continues to thrive, with adjustments made if necessary.

- o The area can be gradually expanded if successful, creating a larger wildlife corridor within the playing field.

Benefits to the Community

- Enhances local biodiversity, supporting pollinators such as bees and butterflies.
- Provides a colourful and natural green space for residents to enjoy.
- Offers educational opportunities for local schools and community groups.
- Strengthens Grafham's reputation for sustainability and care for the environment.

Summary of Initial Costs

- Metal rope posts and rope: **£50**
- Soil tester: **£10**
- Wildflower seed: **£150**
- Signage (laminated sheets): minimal cost

Total estimated initial cost: £210 Future Costs

The remaining budget for this year is proposed to be carried forward to supplement future funds for a permanent fencing solution. The temporary fencing requires a more durable replacement, and the current budget is insufficient to cover this cost. We welcome any suggestions from the parish council on how best to proceed with this proposal.